



Strengthening family, couple, and individual health

# NCAMFT 2017 Annual Conference Sponsorship Opportunities

**March 30, 2017**

**Working with Difficult Men: Trauma, Depression, Aggression**

**AND**

**April 1, 2017  
Trauma & Intimacy—  
Working with Inner  
Child Parts in Couples  
Therapy**

**Both days with  
Terry Real**

Contact Name \_\_\_\_\_

Company Name \_\_\_\_\_

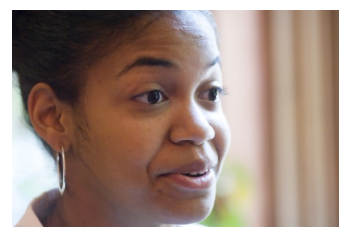
Address \_\_\_\_\_ City/State/Zip \_\_\_\_\_

Phone \_\_\_\_\_ E-mail \_\_\_\_\_

- Gold Sponsors \$1000.00**  
includes lunch sponsorship, free exhibit space, insert in conference materials (you provide), one page ad in Spring 2017 issue of the NCAMFT newsletter, complimentary registration for two company representatives and list of attendees.
- Silver Sponsor \$600.00**  
includes break sponsorship, free exhibit space, insert in conference materials, free half page ad in the Spring 2017 issue of the NCAMFT newsletter, complimentary registration for one company representative and list of attendees.
- Exhibitor \$350.00**  
includes registration for one company representative, one skirted six foot table and list of attendees.

### Hotel Information

All events will be held at the Embassy Suites RTP in Cary, North Carolina. The Embassy has a block of rooms available for attendees at the rate of \$119.00 single/double. **Room reservations must be made by February 27, 2017 by calling the Hotel at 1-800-Embassy.** Individuals must identify themselves as being with the NCAMFT 2017 Conference at the time the reservation is made in order to receive the group rate. **After this date rates and availability cannot be guaranteed.**



Please complete the following credit card information or send a check made payable to NCAMFT to P O Box 98073, Raleigh, NC 27624

MC/VISA Number \_\_\_\_\_ Exp Date \_\_\_\_\_ Security

Code \_\_\_\_\_

Signature \_\_\_\_\_

Questions: Contact the NCAMFT Office at 919-518-1919 or e-mail [cathywomack@customassociation.com](mailto:cathywomack@customassociation.com) for additional information.